

8 - SPECIFIC INFORMATION

Master text

The Personal Protective Equipment Category III **888.000 "DUCK"** is:
 - a rope clamp to be attached to a line and will clamp under load in one direction and move freely in the opposite direction;
 - part of a system preventing/protecting against impact caused by fall from a height;
 - certified according to EN567:2013 and UIAA 126:2018.

Fig. 1 – Attachment – The cam (B) always points towards the free direction:

- open the bracket (A);
- insert the rope/tape between the cam (B) and the drum (C);
- Close the bracket (A) and lock it on the drum (C);
- attach a connector making it pass through the drum (C).

In a safe position and before use, verify that it freely slides towards the direction desired and blocks in the opposite direction.

Fig. 2 – Unblocking – To unblock this device pull the cam (B) or its accessory cord after unloading.

Fig. 3 – Enemy knots – Never push up this device against the knot, it could be very difficult to release it.

Fig. 4 – Lifting – This device can be used to lift loads (WLL 400kg).

Fig. 5 – Adjuster – This device can be used as length adjuster for lanyards attached to the harness.

Fig. 6 - Examples of wrong and dangerous use.

Compatibility – This device has been designed to be used with:

- connectors according to EN362 and/or EN12275;
- ropes with diameter between 8mm-13mm, certified according to EN564, EN892, or EN1891;
- KONG "YAKU" and KONG "ARO TUBULAR" lanyards.

Checks before and after use - Before and after use, make sure that the device is in an efficient condition and that it is working properly, in particular, check that:

- it is suitable for the use you intend to make of it;
- it has not been mechanically deformed;
- it shows no sign of cracks or wear;
- the bracket (A) locks on the drum (C);
- rivets on the plate (D) are intact and without cutting edges;
- the cam (B) fully closes automatically and correctly;
- markings are still readable.

Before use and in a position that is completely safe, on each occasion check that the device holds correctly by putting your weight on it.

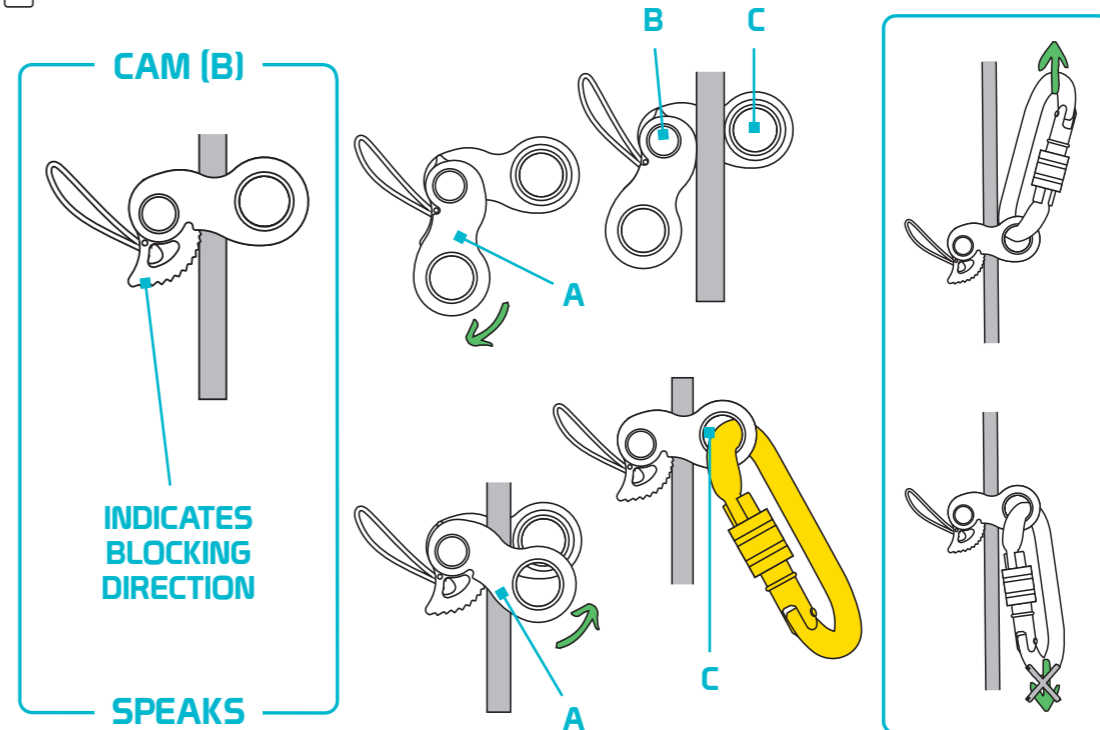
Important:

- this device is not suitable to be used on wire cables;
- the connector shell be fitted with a gate locking device;
- this device works correctly on dry and clean ropes/tapes;
- never use one only blocking devices when progressing on a free rope;
- this device may not work correctly when attached to ropes under tension;
- uses as lifting or adjusting device are not covered by the PPE Regulation (EU) 2016/425;
- particular conditions (e.g. heat, cold, humidity, oil, dust, mud, snow) could hinder or affect the performance of this device.

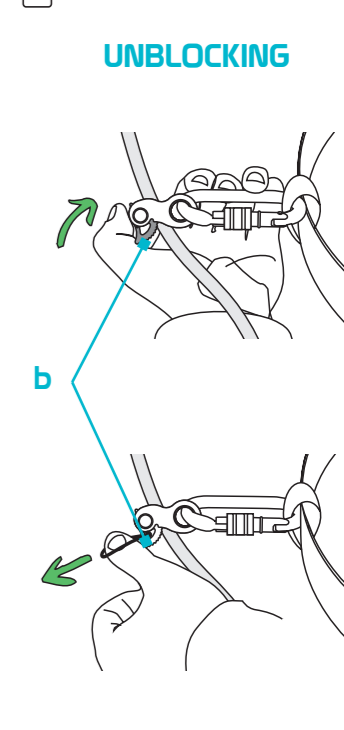
Warning:

- always attach a connector through the drum (C);
- this device is not a fall arrester according to EN363;
- when used for lifting, the rope/tape must always run on the drum (C);
- the potential falling height must always be lower than 0.5 m unless the user is equipped with suitable certified devices (eg. Energy absorbers according to EN355) that protects from dynamic forces exerted on the user during the arrest of a fall.
- always keep the device:
 - below the anchor point of the rope/tape;
 - above the attachment point of the harness.

1

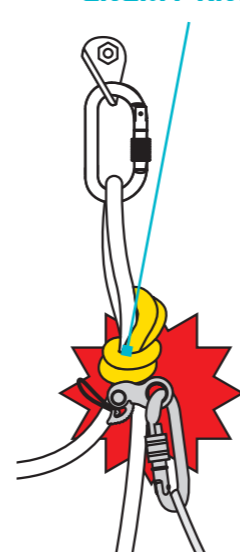


2



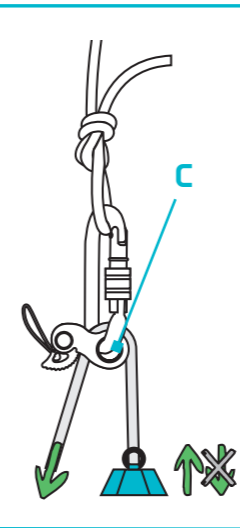
3

DREADFUL ENEMY KNOT

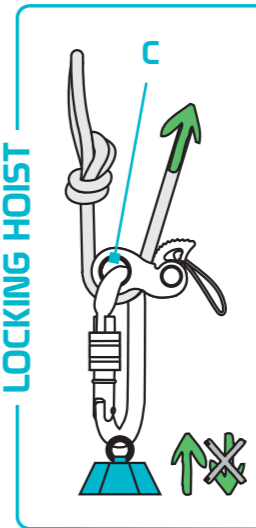


4

LIFTING AND LOCKING



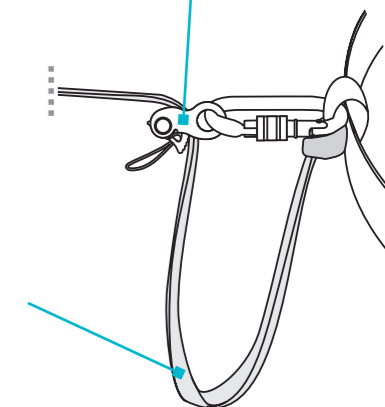
LOCKING HOIST



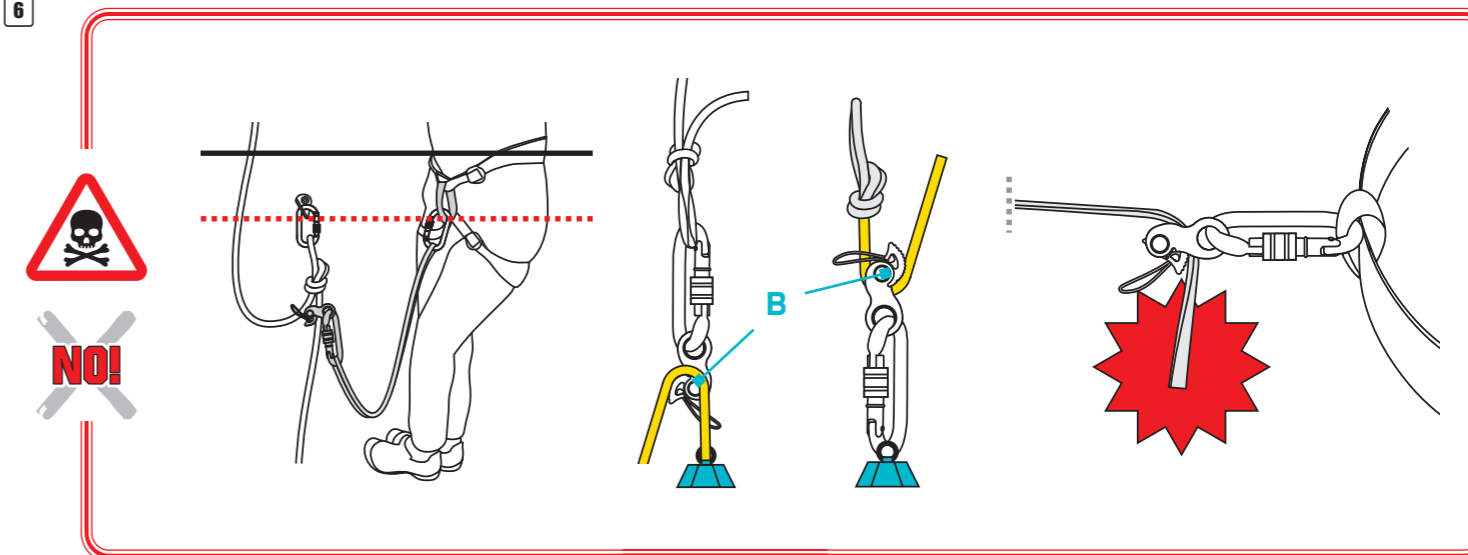
5

LENGTH ADJUSTER

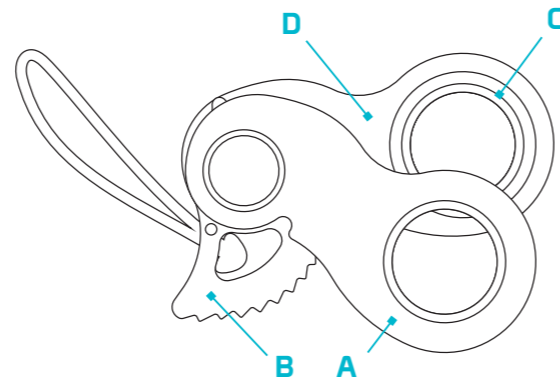
SUITABLE LANYARD ATTACHED TO THE HARNESS



6



NOMENCLATURE • NOMENCLATURA



EN: (A) Mobile bracket in aluminium alloy, (B) Clamping cam in steel, (C) Drum in steel, (D) Main plate in aluminium alloy.

IT: (A) Supporto mobile in lega di alluminio, (B) Camma di serraggio in acciaio, (C) Tamburo in acciaio, (D) Piastra principale in lega di alluminio.

FR: (A) Support mobile en alliage d'aluminium, (B) Came de serrage en acier, (C) Tambour en acier, (D) Plaque principale en alliage d'aluminium.

DE: (A) Bewegliche Halterung aus Aluminiumlegierung, (B) Nocken aus Stahl, (C) Stahltrommel, (D) Hauptplatte aus Aluminiumlegierung.

ES: (A) Soporte móvil en aleación de aluminio, (B) Leva de sujeción en acero, (C) Tambor en acero, (D) Placa principal en aleación de aluminio.

NOMENCLATURE • TERMINOLOGIE • NOMBRES



DUCK

www.kong.it

ZZV05522 rev.0

DUCK 888.000

